

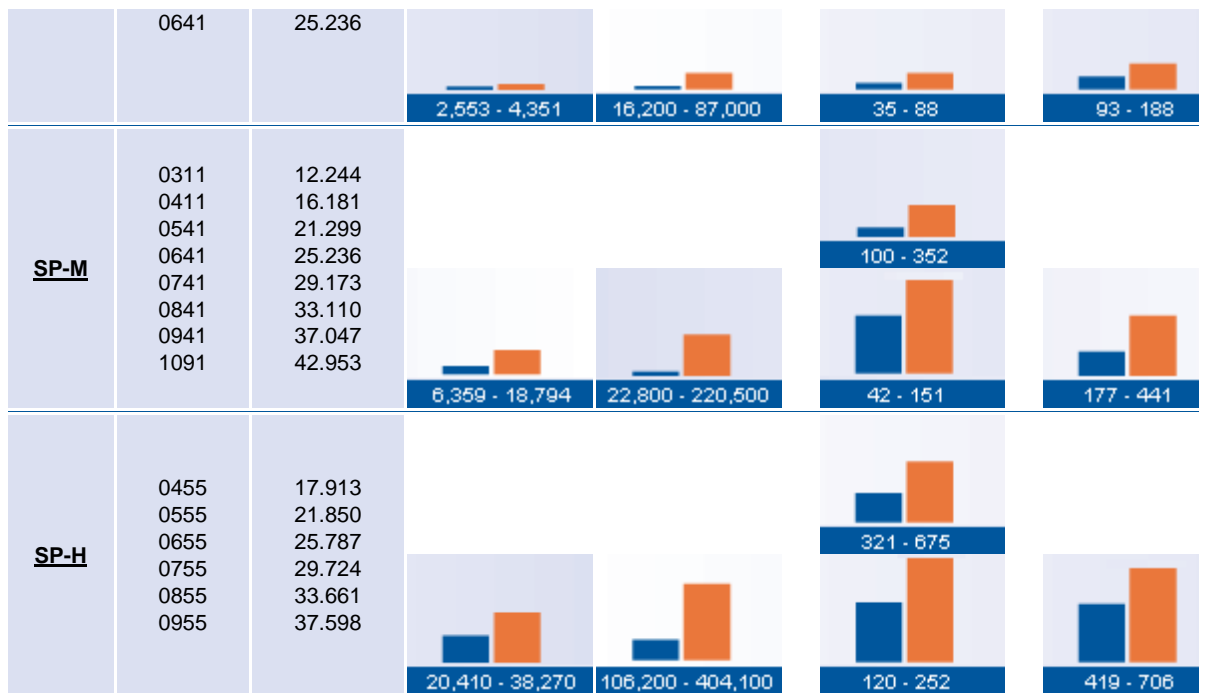


Product Line Overview / Comparison

Design types	Series	Sizes	Raceway diameters DL [in]	Maximum torque ¹⁾ $M_{d,max}$ [ft-lbs]	Maximum tilting moment ¹⁾²⁾ $M_{k,max}$ [ft-lbs]	Load carrying capacity ¹⁾		Weight ¹⁾ G [lbs]
						Static axial load rating $C_{0,ax}$ [lbs x 1,000]	Static radial load rating $C_{0,rad}$ [lbs x 1,000]	
Worm gear driven types 	<u>WD-L</u> 3)	0223	223					
		0343	343					
		0419	419					
		0478	478	9303 - 42824	28 - 318	547 - 2364	48 - 250	
		0625	625			204 - 883		
<u>WD-LA</u>		0223	8.780					
		0343	13.504					
		0419	16.496					
		0478	18.819	6,881 - 31,58	20,600 - 234,500	122 - 531	106 - 552	
		0625	24.606					
		0625	24.606			45 - 198		
<u>WD-H</u>		0146	8.071					
		0220	11.024					
		0300	14.567					
		0373	17.795					
		0490	22.402	2,957 - 112,559	37,600 - 775,900	271 - 1,681	101 - 793	
		0645	28.543					139 - 1,059
spur gear driven types 	<u>SP-L</u>	0311	12.244					
		0411	16.181					
		0541	21.299					
		0641	25.236					
		0741	29.173					
		0841	33.110					
		0941	37.047					
		1091	42.953	2,299 - 7,155	10,300 - 107,600	46 - 164	20 - 70	100 - 265
<u>SP-I</u>		0229	9.016					
		0411	16.181					
		0541	21.299					
		0541	21.299			95 - 207		



1) The data refers to the minimum and maximum diameter per series.

2) The tilting moment capacity for each unit should be confirmed by referring to the limiting load diagram for each individual unit.

3) Please note: Dimensions in SI-system (metric).