



# Drill fast & safe

**Slewing rings and slew drives by IMO have been impressive in drilling rigs for more than 25 years with their long service life and reliability, even on hard rock formations.**

Heavy-duty ball slewing ring with hardened gears for a drilling rig



## Drilling rigs

### IMO slewing rings

- external gears, internal gears or without gears
- single-row or double-row ball slewing rings
- 3-row roller slewing rings
- cross roller slewing rings
- gear rims
- special sealing solutions

### IMO slew drives

- pinion and worm driven versions
- fully enclosed housing for rugged environmental conditions
- max. torques up to 450 kNm
- max. breakdown torque load up to 1200 kNm
- raceway diameter up to approx. 1000 mm



Drilling rig with external gear ball-roller combination slewing ring, outside diameter approx. 900 mm

- vertical drilling rigs
- horizontal drilling rigs
- drilling booms
- ...

Drilling and handling in a compact solution. Slew drives available in a broad offering of economical standard solutions or as a tailor-made customer solution.

# Your Advantages

## for purchasing

- focus on cost-efficient solutions
- delivery times you can rely on
- fast reaction times

## for service

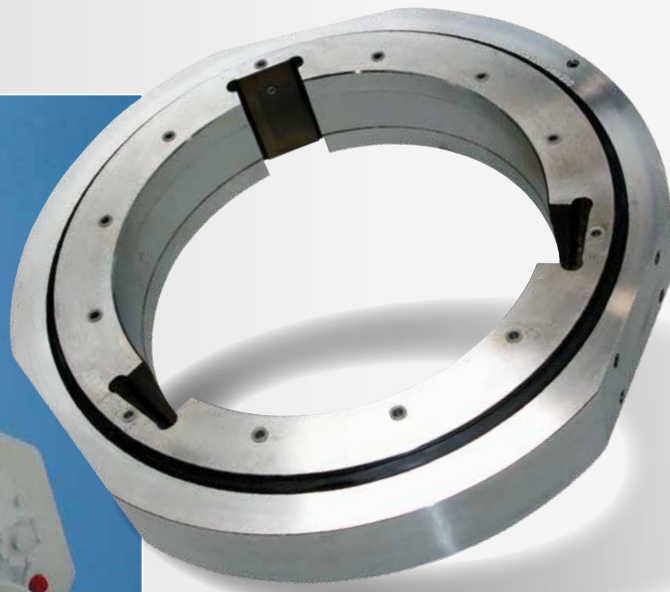
- reduced servicing costs
- long service life
- worldwide service & spare parts

## for engineering

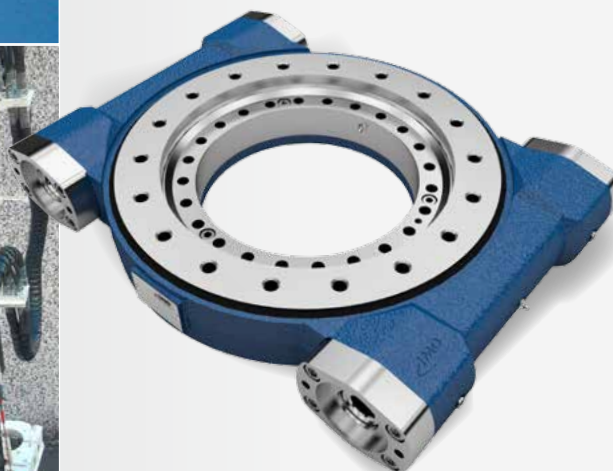
- impact and vibration-resistant
- customer-specific versions
- special seals to prevent ingress of dirt and coarse particles

## for end customers

- high levels of operational safety
- permits large feed lengths
- reduced operating costs



Ball slewing ring in special design with wedge-shaped pockets for clamping the drilling rods during the rotary motion



Drilling booms whose horizontal drilling linkage is taken into position using a slew drive from the WD-L range (two drives)

# IMO

made in Gremsdorf,  
Germany

More than 25 years on your side.

## Certifications

- ISO 9001
- ISO 14001
- OHSAS

## Headquarters

IMO GmbH & Co. KG  
Imostr. 1  
91350 Gremsdorf  
Germany

Tel. +49 9193 6395 - 4434  
Fax +49 9193 6395 - 4140  
drilling@imo.de

## Your contact in the US

IMO USA Corp.  
Tel. +1 843 695-6200  
americas@imo.us